



# Posse Grounds Park



Red labels indicate new, modified, or relocated facilities

Black labels indicate facilities that will remain in place

Proposed buildings are shown in yellow

### Proposed facilities:

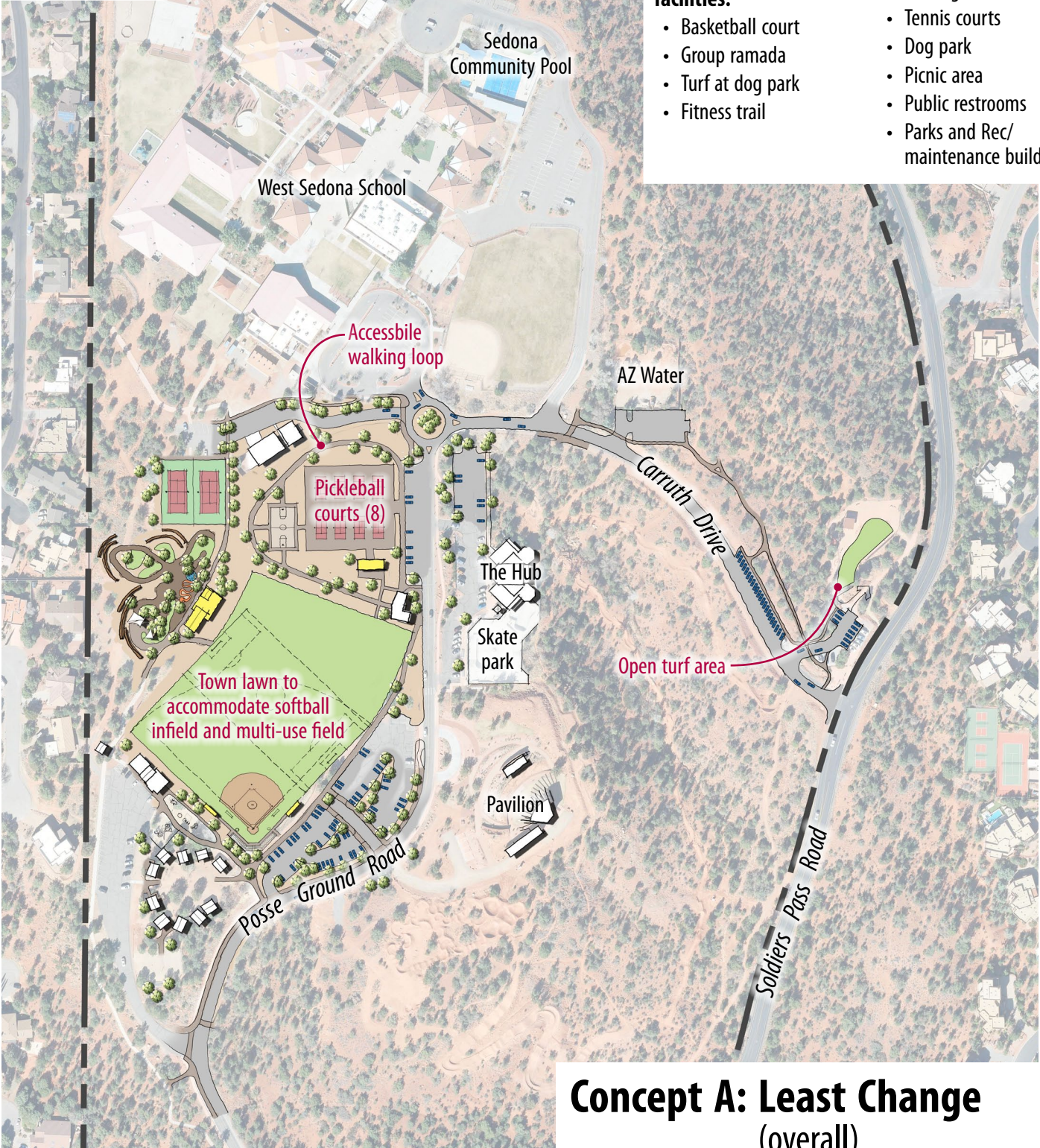
- 8-plex pickleball
- Combined turf fields
- Optional children's garden
- Accessible walking loop

### Modified/relocated facilities:

- Basketball court
- Group ramada
- Turf at dog park
- Fitness trail

### Existing facilities to remain as is:

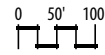
- Barbara's Park
- The Hub
- Bike skills areas
- Skate park
- Posse Ground Road
- Parking lots
- Tennis courts
- Dog park
- Picnic area
- Public restrooms
- Parks and Rec/maintenance buildings



## Concept A: Least Change (overall)



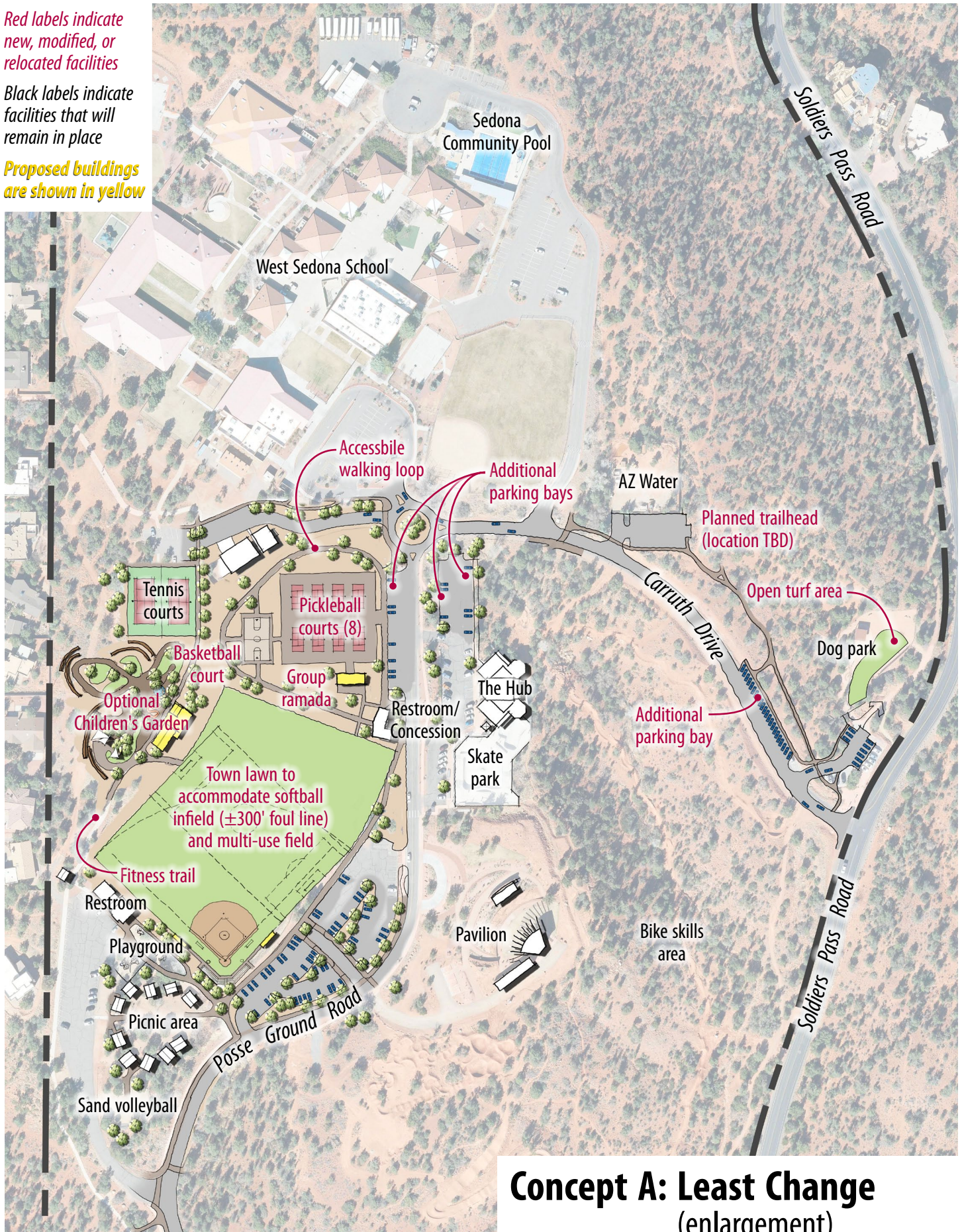
# Posse Grounds Park



Red labels indicate new, modified, or relocated facilities

Black labels indicate facilities that will remain in place

Proposed buildings are shown in yellow



**Concept A: Least Change**  
(enlargement)



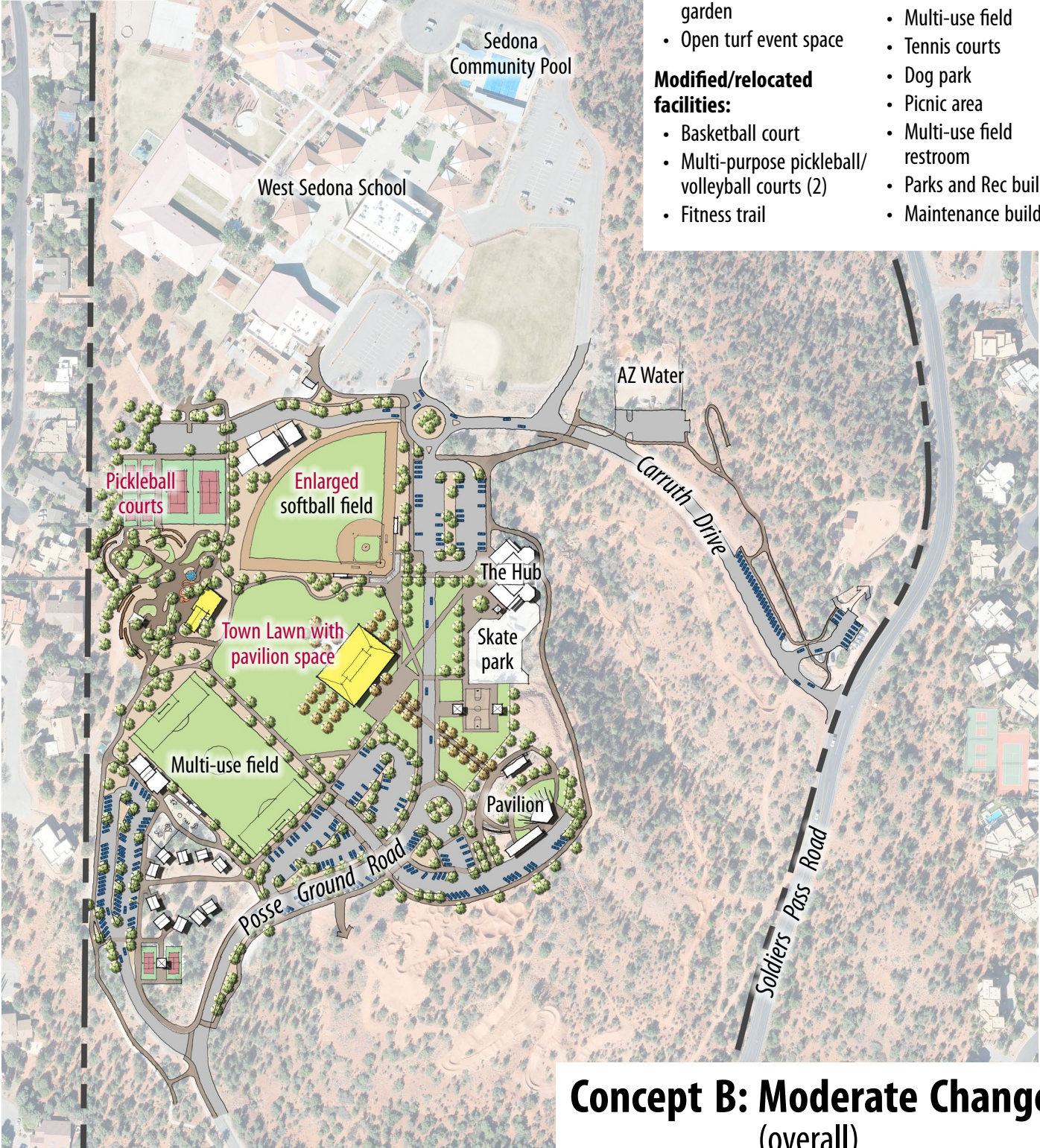
# Posse Grounds Park



Red labels indicate new, modified, or relocated facilities

Black labels indicate facilities that will remain in place

Proposed buildings are shown in yellow



### Proposed facilities:

- 14,000SF pavilion
- Connected event spaces (Barbara's Park and open turf)
- Pickleball courts (4)
- Expanded parking
- Optional children's garden
- Open turf event space

### Modified/relocated facilities:

- Basketball court
- Multi-purpose pickleball/volleyball courts (2)
- Fitness trail

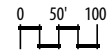
### Existing facilities to remain as is:

- Pavilion
- The Hub
- Bike skills areas
- Skate park
- Posse Ground Road
- Softball field
- Multi-use field
- Tennis courts
- Dog park
- Picnic area
- Multi-use field restroom
- Parks and Rec building
- Maintenance building

## Concept B: Moderate Change (overall)



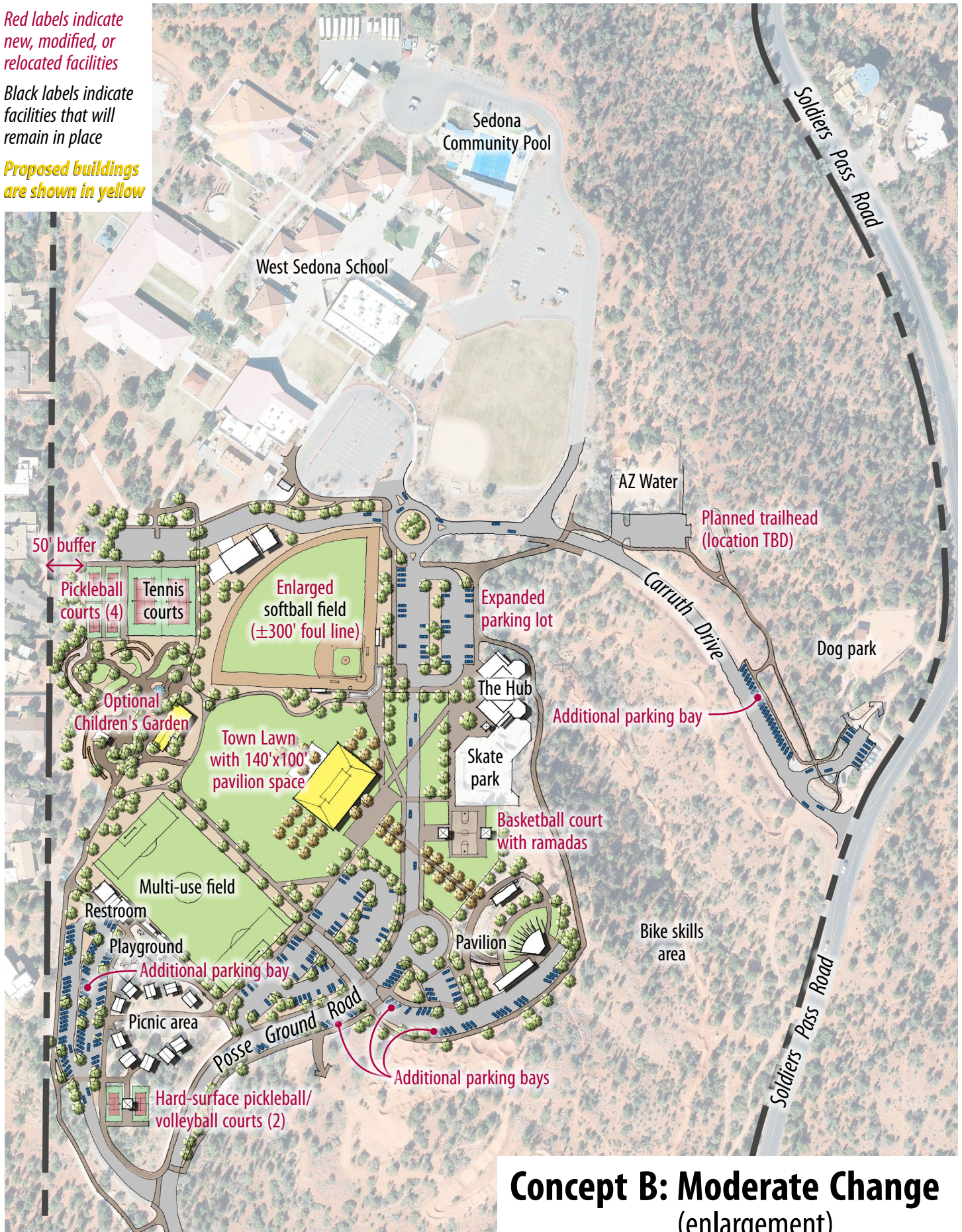
# Posse Grounds Park



Red labels indicate new, modified, or relocated facilities

Black labels indicate facilities that will remain in place

Proposed buildings are shown in yellow



**Concept B: Moderate Change**  
(enlargement)



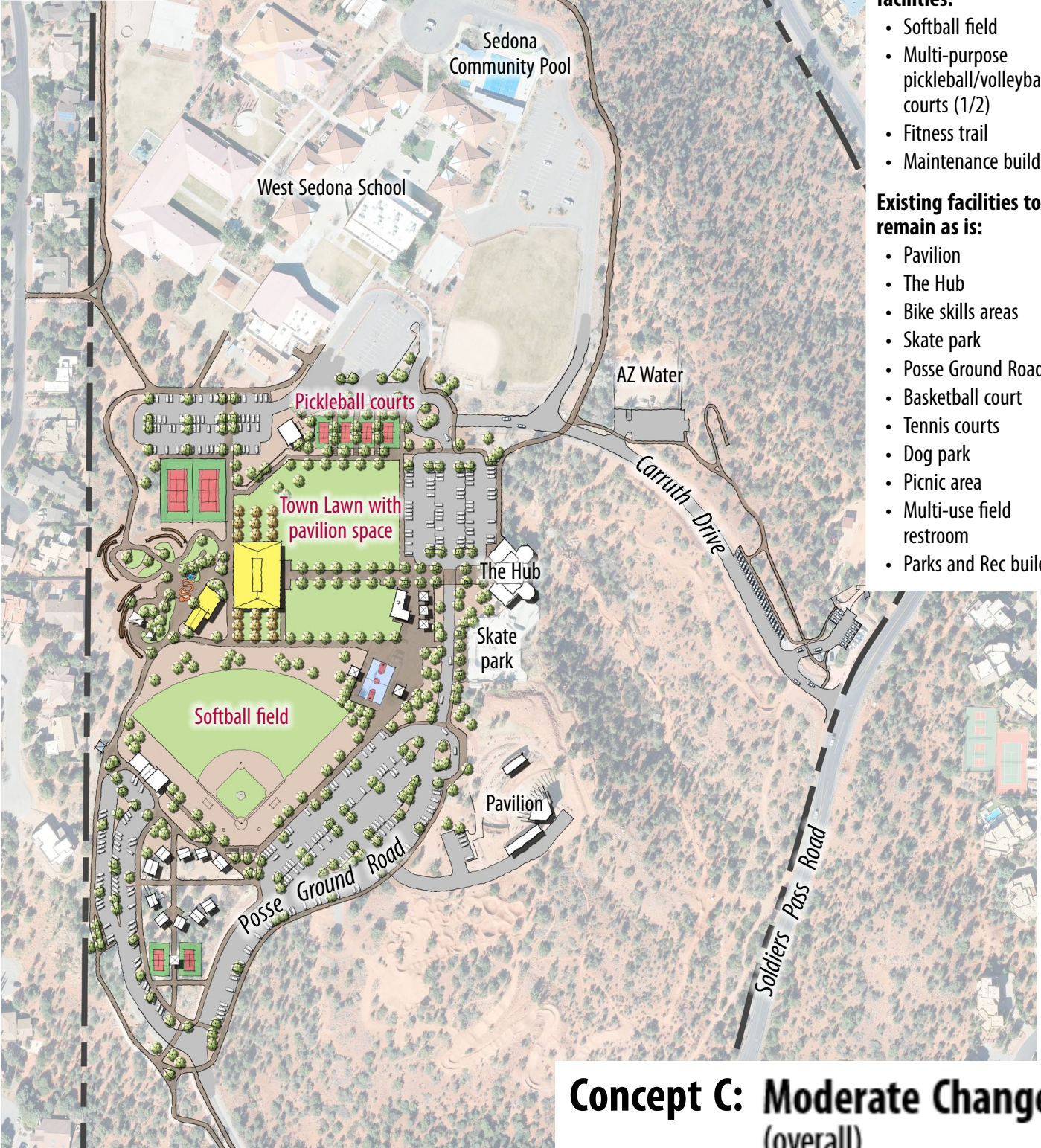
# Posse Grounds Park



Red labels indicate new, modified, or relocated facilities

Black labels indicate facilities that will remain in place

Proposed buildings are shown in yellow



### Proposed facilities:

- 14,000SF pavilion
- Expanded parking
- Optional children's garden
- Open turf event space

### Modified/relocated facilities:

- Softball field
- Multi-purpose pickleball/volleyball courts (1/2)
- Fitness trail
- Maintenance building

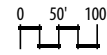
### Existing facilities to remain as is:

- Pavilion
- The Hub
- Bike skills areas
- Skate park
- Posse Ground Road
- Basketball court
- Tennis courts
- Dog park
- Picnic area
- Multi-use field restroom
- Parks and Rec building

## Concept C: Moderate Change (overall)



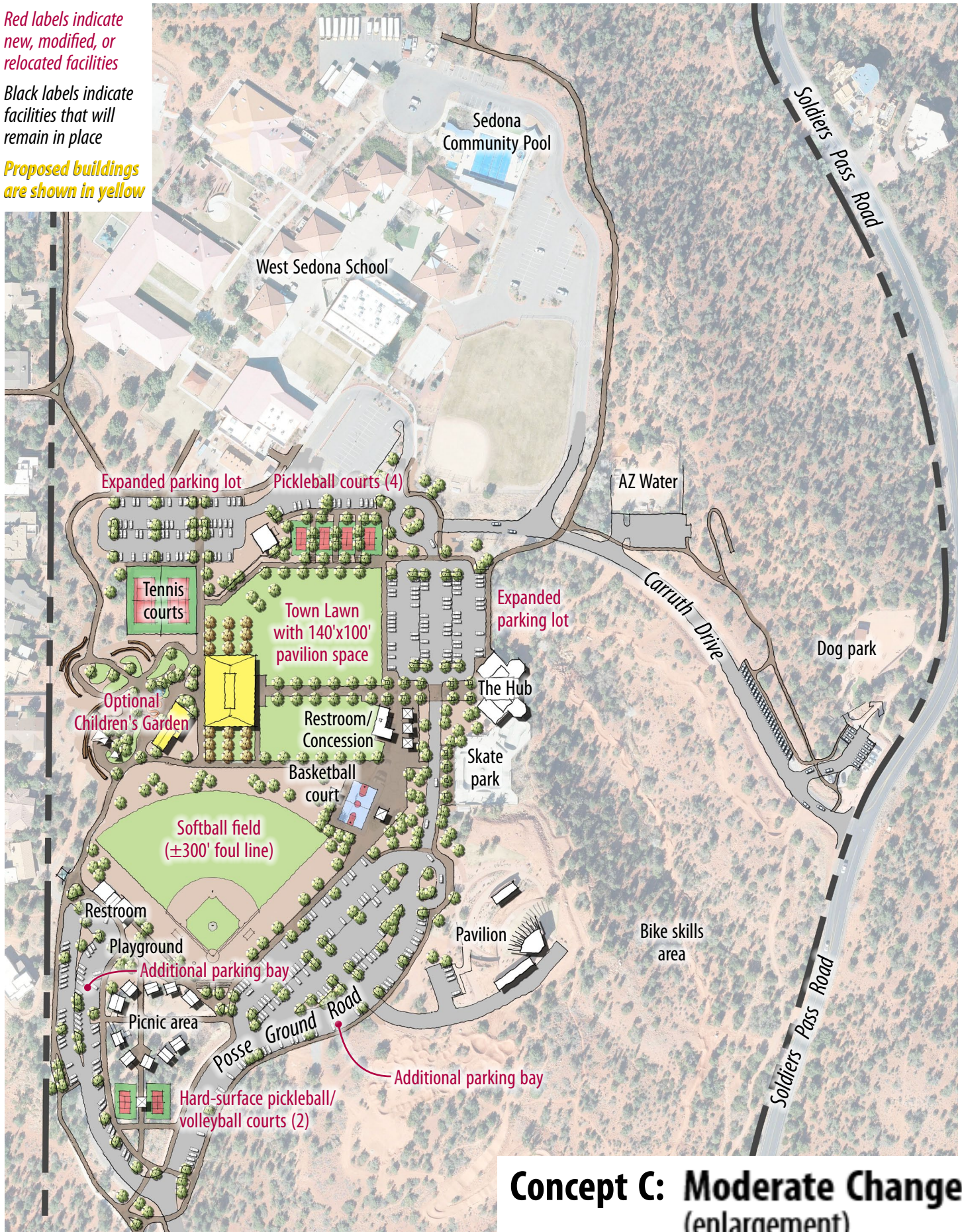
# Posse Grounds Park



Red labels indicate new, modified, or relocated facilities

Black labels indicate facilities that will remain in place

Proposed buildings are shown in yellow



**Concept C: Moderate Change (enlargement)**



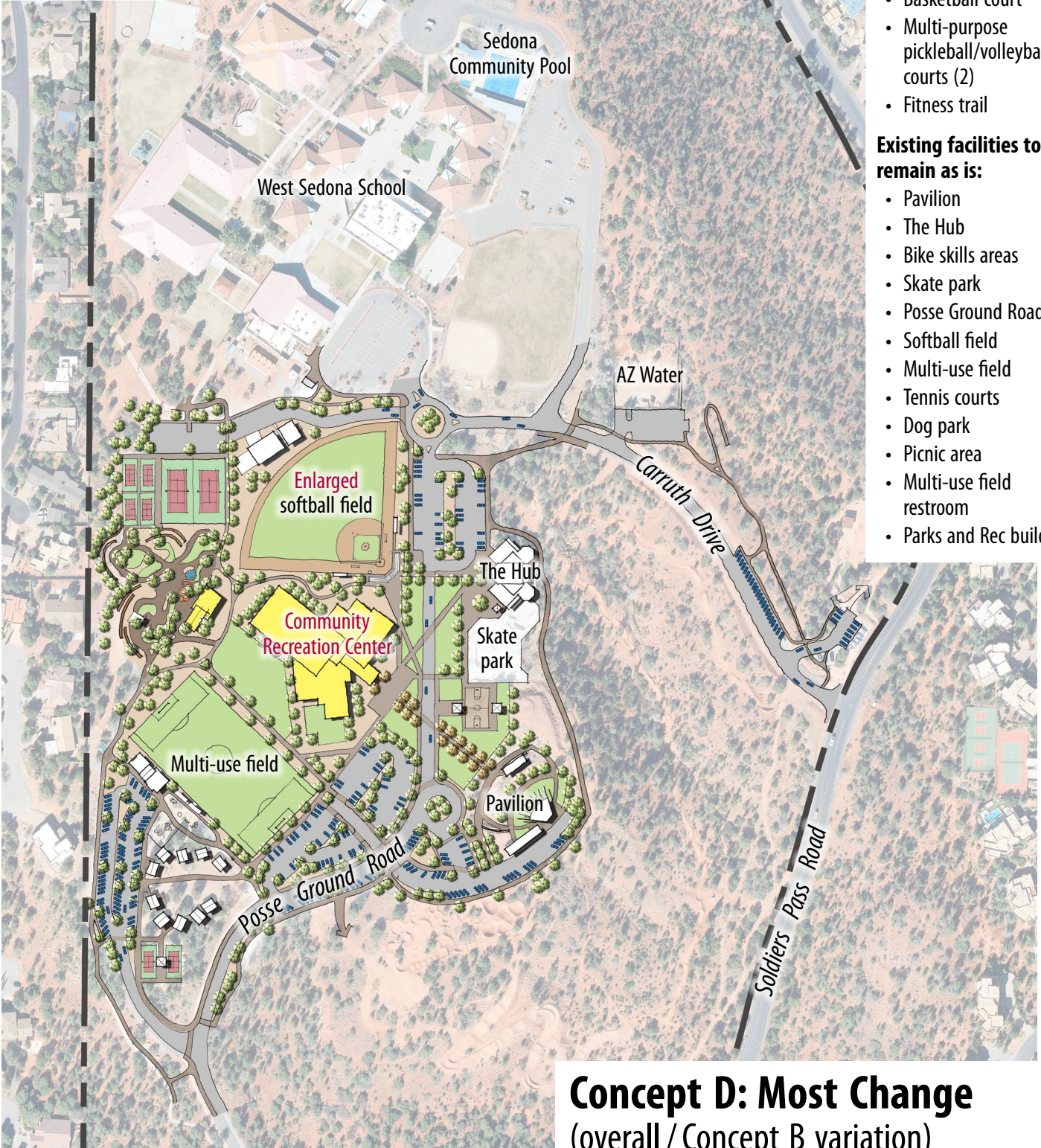
# Posse Grounds Park



Red labels indicate new, modified, or relocated facilities

Black labels indicate facilities that will remain in place

Proposed buildings are shown in yellow



### Proposed facilities:

- Recreation center
- Expanded parking
- Optional children's garden

### Modified/relocated facilities:

- Basketball court
- Multi-purpose pickleball/volleyball courts (2)
- Fitness trail

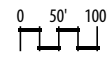
### Existing facilities to remain as is:

- Pavilion
- The Hub
- Bike skills areas
- Skate park
- Posse Ground Road
- Softball field
- Multi-use field
- Tennis courts
- Dog park
- Picnic area
- Multi-use field restroom
- Parks and Rec building

**Concept D: Most Change**  
(overall / Concept B variation)



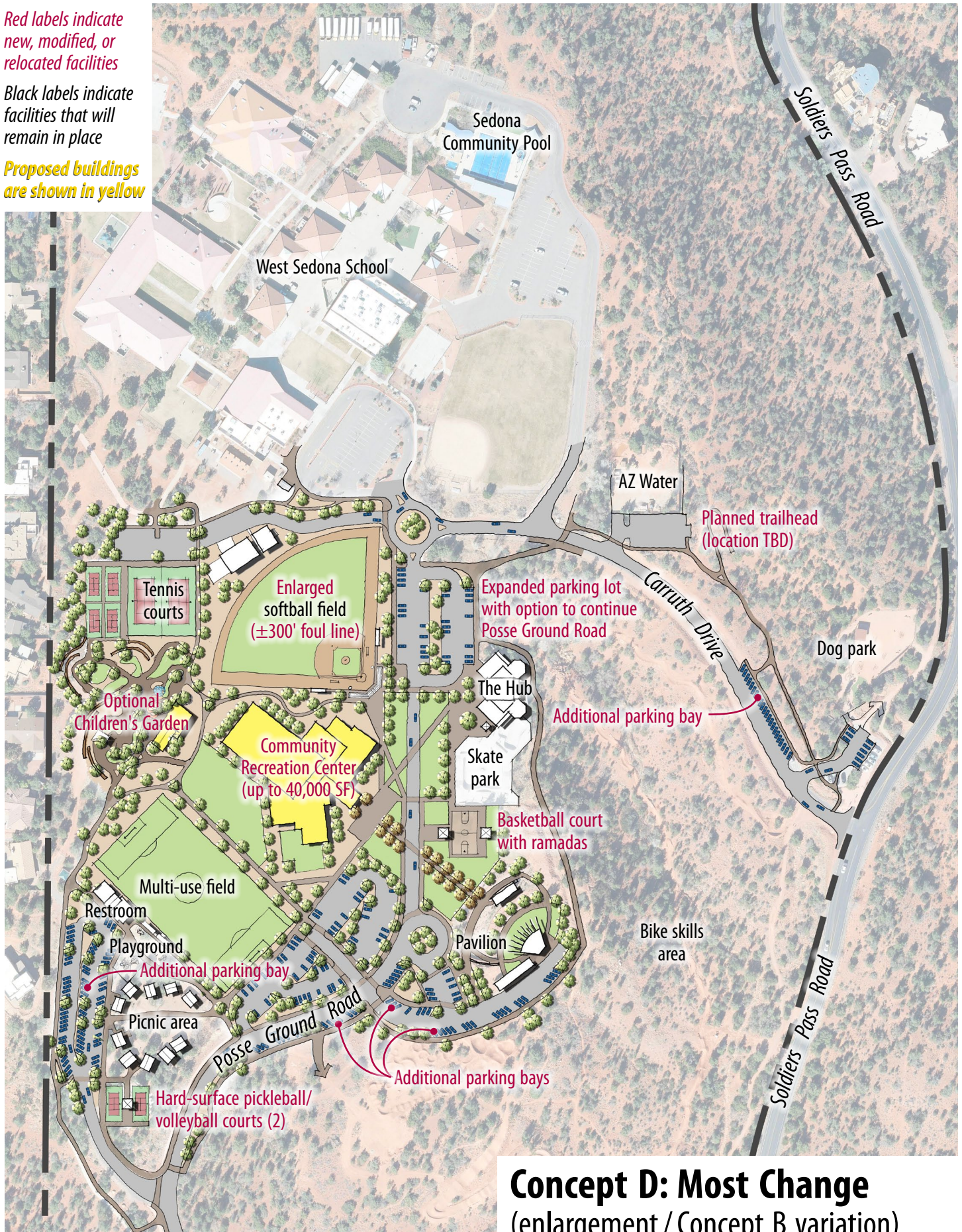
# Posse Grounds Park



Red labels indicate new, modified, or relocated facilities

Black labels indicate facilities that will remain in place

Proposed buildings are shown in yellow



**Concept D: Most Change**  
(enlargement / Concept B variation)